

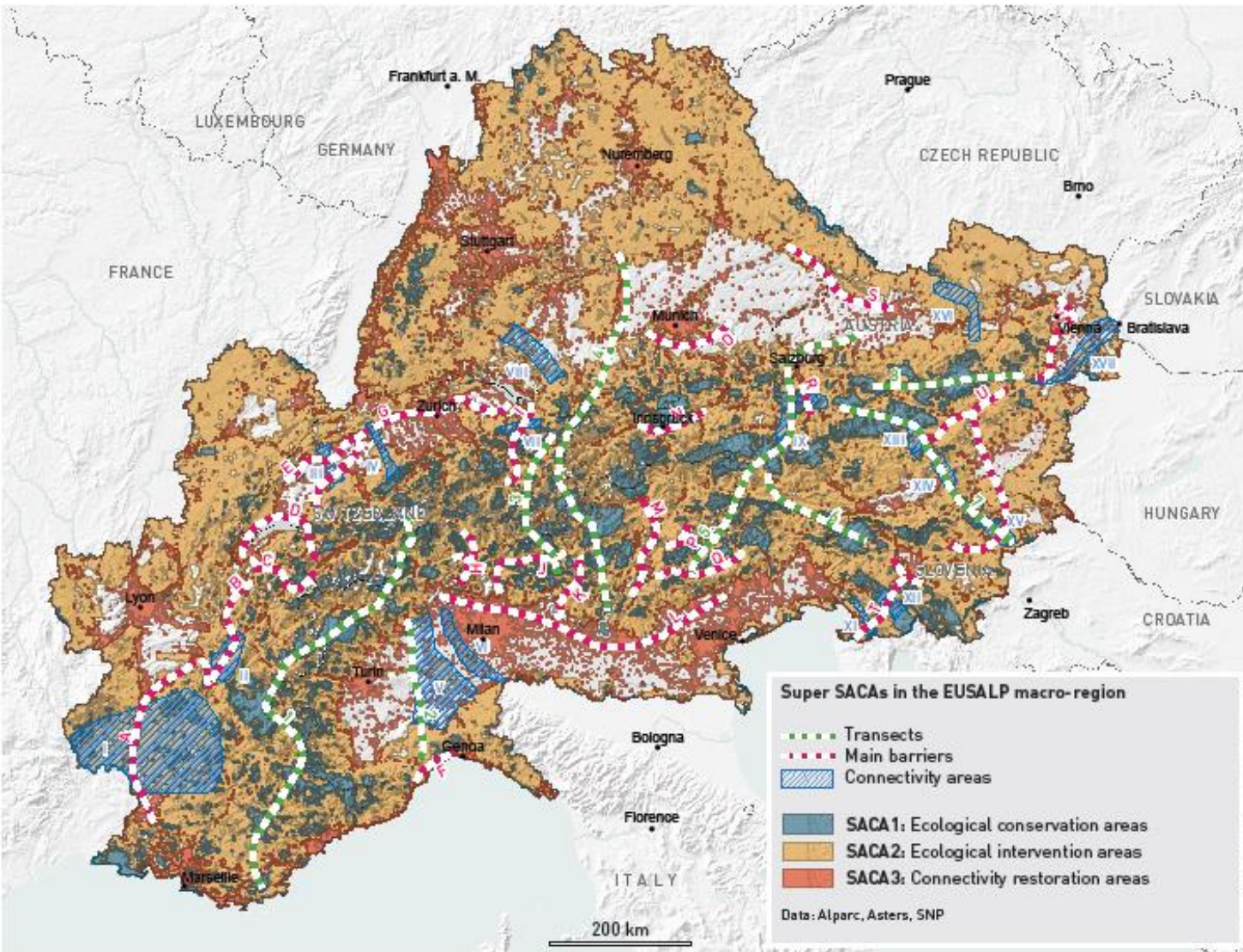


Interreg Alpine Space Kick-off conference 2021-2027

Dr. Guido Plassmann

Salzburg 23rd november 2021

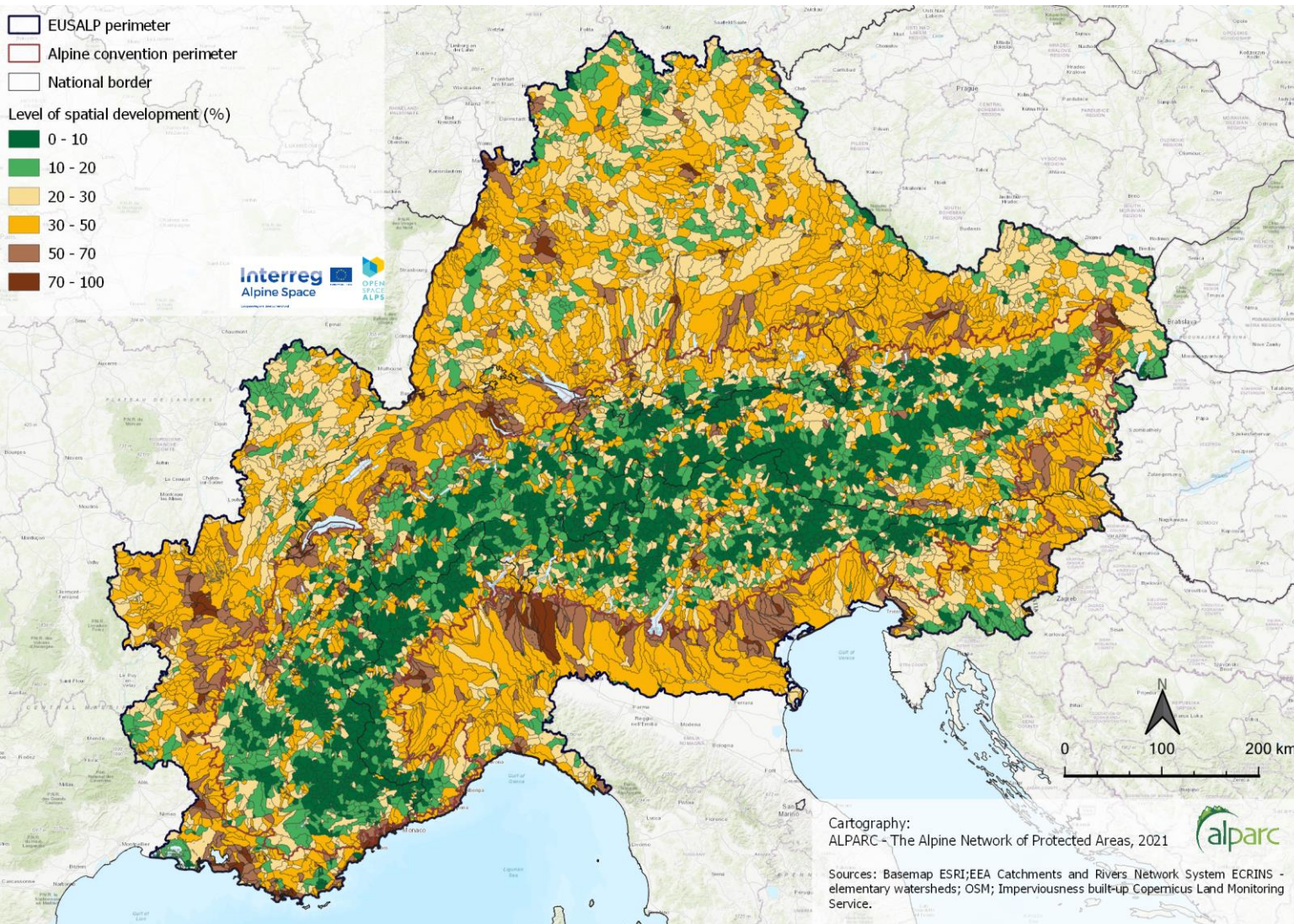




Quality criteria - ecological connectivity potential

The elaboration of Strategic Alpine Connectivity Areas (SACA) approach was one of the main challenges of the ALPBIONET2030 project.

This classification of the alpine and EUSALP area in three types of categories offering the possibility to better target actions in favor of ecological connectivity has led to an innovative cartography of the alpine territory.



Spatial development and distribution within the EUSALP perimeter.

Level of spatial development:

Indicator for the coverage of infrastructure components and their disruptive spatial effects.