

---

Interreg



Co-funded by  
the European Union

Alpine Space

---

INNOBIOVC

# Embed VCG and SAT for IEC applicants

Output O 1.4

## Summary

This report shows how VCG and SAT were embedded to be used by the IEC applicants.



OUTPUT DESCRIPTION

<b>OUTPUT:</b> O 1.4 Embed VCG and SAT to be available for IEC applicants
<b>WORK PACKAGE:</b> WP1. Rolling-out the enhanced Innovation Express Scheme for establishing cross-regional value chains <b>ACTIVITY 1.3:</b> Roll out the enhanced Innovation Express Call Scheme (IEC) for establishing cross-regional value chains
<b>AUTHOR(S):</b> Alexandra Wolf
<b>DUE DATE:</b> 30/09/2024
<b>ACTUAL SUBMISSION DATE:</b> 27/09/2024
<b>DISSEMINATION LEVEL</b> <input type="checkbox"/> CO: Confidential, only for members of the consortium (including the Commission Services) <input type="checkbox"/> CI: Classified as referred to in Commission Decision 2001/844/EC <input checked="" type="checkbox"/> PU: Public
<b>GRANT AGREEMENT No:</b> ASP0400287
<b>PROJECT STARTING DATE:</b> 01/04/2023
<b>PROJECT DURATION:</b> 18 months
<b>COORDINATOR:</b> Wirtschaftsförderung Raum Heilbronn GmbH

Quality of information

Co-funded by the European Union – Interreg Alpine Space. However, views and opinions expressed are those of the author(s) only and do not necessarily reflect those of the European Union or Interreg Alpine Space Programme. Neither the European Union nor the granting authority can be held responsible.

Reproduction is authorised subject to citing the source unless otherwise indicated. For use/reproduction of third-party material specified as such, permission must be obtained from the copyright. For further information on the INNObioVC project and to download additional resources, refer to the project website:

<https://www.alpine-space.eu/project/innobiovc/>

@InnoBioVC, 2023

REVISION HISTORY			
Version	Date	Modified by	Comments
0.1	01/07/2024	WFG	The first draft is shared among consortium partners.
Final	20/08/2024	WFG	Finalized.

## TABLE OF CONTENTS

**Executive summary..... 3**

**1. Introduction to the innovation express call 2024..... 4**

**2. Sustainability assessment tool ..... 7**

**3. value chain generator..... 8**

**4. embed vcg and sat to be available for iec applicants..... 9**

Table 1: Overview of regions and funding programmes interested in participating in IEC24.....4

Figure 1: Workflow of VCG and SAT for IEC24..... 7

Figure 2: Workflow of VCG and SAT for IEC24 for website..... 9





## 1. INTRODUCTION TO THE INNOVATION EXPRESS CALL 2024

The Innovation Express Call 2024 was created and established with the following final five participating regions:

- AT, Salzburg
- AT, Upper Austria
- CH, Canton of Fribourg
- DE, Bavaria
- DE, Brandenburg

From these regions six funding programmes were available for the participants to be used. The funding programmes are listed in the following table.

Table 1: Overview of regions and funding programmes interested in participating in IEC24

PARNTER REGION	FUNDING PARNTER	PARTICIPATING NATIONAL / REGIONAL FUNDING PROGRAMME	TYPE OF APPLICANTS	TYPE OF ACTIVITIES
AT / Salzburg	Regional Government Office of Land Salzburg, Department Economy, Tourism and Municipalities	<b>WISS FTI-Förderprogramme</b> <a href="http://www.salzburg.gv.at/wirtschaft_/Seiten/fti-foerderung.aspx">www.salzburg.gv.at/wirtschaft_/Seiten/fti-foerderung.aspx</a>	SME, companies & Research Institutions	Applied R&D
AT / Upper Austria	Regional Government Office of Upper Austria, Directorate for Regional Planning, Economic and Rural Development Department of Economics and Research	<b>Unternehmens- und Forschungskooperationsförderung 2024 - 2026 (Business and research cooperation funding 2024-2026)</b> <a href="http://www.land-oberoesterreich.gv.at/526010.htm">www.land-oberoesterreich.gv.at/526010.htm</a>	SME, big companies, R&D organisations (only in combination with an SME in Upper Austria)	Applied R&D, industrial research, experimental development; Technology projects & technology based organisational innovation projects
CH / Canton Fribourg	School of Engineering and Architecture of Fribourg	<b>Fund for application-oriented research and development</b>	School of Engineering and Architecture of Fribourg (HES-SO) researchers and institutes	Research and Development
	Confederation and Canton of Fribourg	<b>New Regional Policy - Collaboration projects</b>	Research institutes, companies	Applied R&D. Focus on pre-competitive collaborations.
DE / Bavaria	Bavarian State Ministry of Economic Affairs, Regional Development and Energy	<b>BayBioökonomie Scale-up</b> (Bioeconomy-Scale-Up) <a href="http://www.stmwi.bayern.de/foerderungen/biooekonomie-scale-up/">www.stmwi.bayern.de/foerderungen/biooekonomie-scale-up/</a>	Start-Ups; SMEs and big companies	Production facilities for the utilisation of biogenic resources
DE / Brandenburg	Ministry of Economic Affairs, Labour and Energy State of Brandenburg (MWAE)	<b>ProFIT Brandenburg 2023</b> - Programm zur Förderung von Forschung, Innovationen und Technologien Programme to support research, innovation and technologies <a href="http://www.ilb.de/de/wirtschaft/zuschuesse/profit-brandenburg-2023/">www.ilb.de/de/wirtschaft/zuschuesse/profit-brandenburg-2023/</a>	SME. Big companies and R&D organizations only in combination with an SME in Brandenburg	Applied R&D, industrial research, experimental development; projects should develop a new or improved product, process or service





INNOBIOVC

development of innovative solutions in two given thematic fields for projects by developing transregional linkages among SMEs, research institutions and other business organizations. Innovation Express Call 2024 is a joint call for proposals implemented within the frame of the INNOBIOVC project by synchronizing existing regional funding schemes in the Alpine Space and beyond.

**Synchronizing of existing regional funding programmes under the IEC24 means:**

- Regions participate with their own, existing regional funding programmes.
- Participating regions remain in full control of their administrative procedures, financial management of the call as well as the decision-making process.
- Funding and eligibility rules apply according to the regional funding programme of the applicant's regions.
- Applications will be evaluated based on their potential to create benefits for participating applicants, to contribute to the competitiveness of the regional economy and in accordance with the criteria from the respective regional/national funding programmes.



## 2. SUSTAINABILITY ASSESSMENT TOOL

The Sustainable Assessment Tool (SAT) was specifically designed to keep in mind the objectives of the **Innovation Express Call 24 (IEC24)** a joint call for proposals implemented by synchronizing existing regional funding schemes in the Alpine Space and beyond. This Alpine space call targets biobased companies seeking to implement and enhance their business models. To maximize its utility for potential applicants, the SAT has been integrated into the project’s webpage starting from March 2024 (<https://www.iec24.info/tools.html>), complete with a comprehensive **explanatory PDF** outlining its functionality.

Additionally, a decision-flow diagram has been provided to guide users through the process, ensuring they can effectively exploit the tool to meet their sustainability goals and choose to use the SAT in addition to the **VCG.AI**, an artificial intelligence tool that allows creating a sustainable value chain from zero.

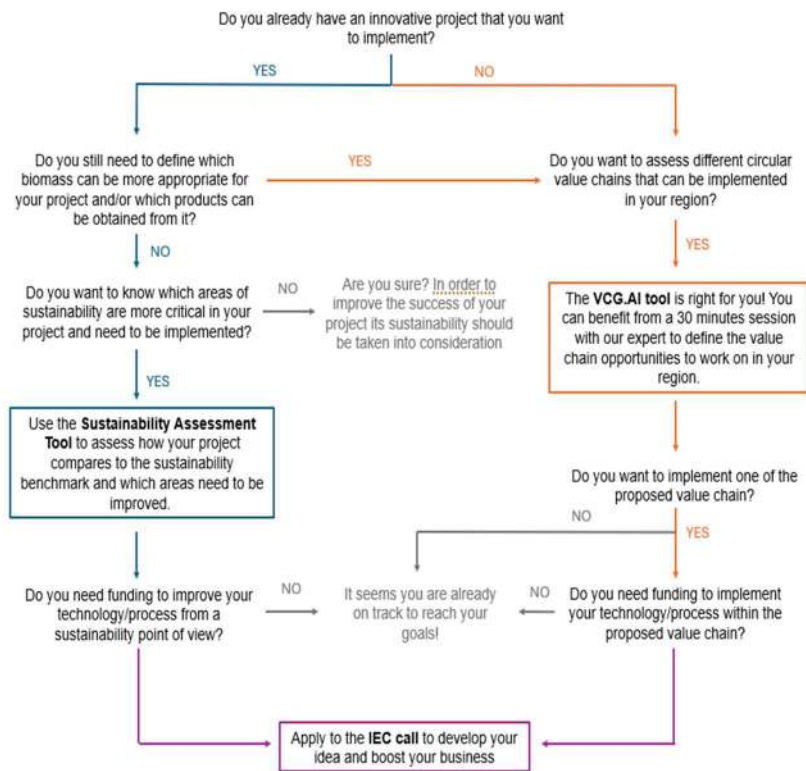


Figure 1: SAT decision Flow

Figure 1: Workflow of VCG and SAT for IEC24





### 3. VALUE CHAIN GENERATOR

The Value chain generator utilizes the cutting edge BioLink® algorithm to define technologically sound and commercially viable circular value chains and business models for the regions and clusters.

#### **Value Chain Generator (VCG) A Pathway to Circularity and Profitability**

VCG leverages AI and big data Biolink® model, to repurpose industrial residuals into valuable resources and products. VCG not only enhances the profitability of companies in the region, but also aligns with climate targets by fostering a transition towards a circular economy.

#### **Creating High-Demand Products from Waste**

By matching companies based on their resource needs and residuals, VCG facilitates the creation of in-demand market products. It offers technical solutions and fosters business partnerships that reduce waste treatment costs, generate new revenue streams, and improve overall profitability. Simultaneously, it contributes to the reduction of CO2 emissions and the conservation of land and freshwater resources.

#### **Empowering Regional Development Agencies, Clusters, and Chambers**

VCG serves regional development agencies, clusters, and chambers in their effort to accelerating the adoption of circular economy practices among their members. It enables the exploration and development of viable solutions and concrete partnerships for projects and investments. Additionally, VCG promotes knowledge transfer across projects and initiatives, facilitating best practice sharing and expediting the transition to a circular economy while leveraging European-developed technologies.



## 4. EMBED VCG AND SAT TO BE AVAILABLE FOR IEC APPLICANTS

The process of embedding VCG and SAT to be available for IEC applicants started by discussions between the responsible parties of the IEC, VCG and SAT in a few virtual online sessions (14.11.23; 19.01.24; 06.02.24).

The outcome was to provide IEC applicants the opportunity to choose if they use the SAT and/or the VCG depending on different stages at their own proposal and company. In this matter a workflow was created for the user to decide which tool can support him best in his progress towards the IEC. The workflow was then adjusted graphically to fit into the website design:

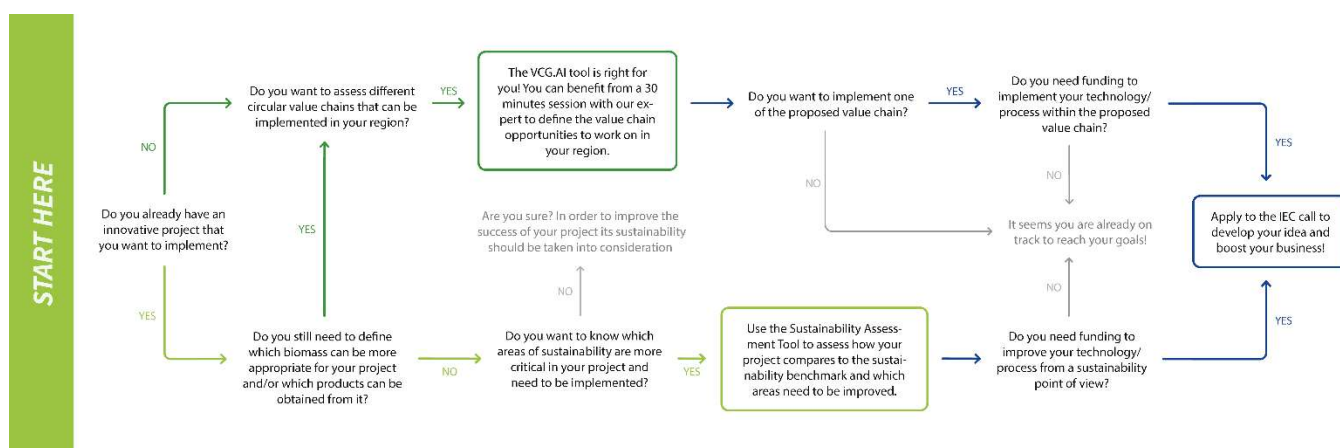


Figure 2: Workflow of VCG and SAT for IEC24 for website

This means if a company already has a project or a project idea and they need to define which biomass can be best for the project and/or which products it can be obtained from they can use the SAT. Also if they want to know which area of sustainability are critical for their project the SAT tool can be used. The SAT is used to assess how the project compares to the sustainability benchmark and which areas (environmental, economic, social) need to be improved. The VCG.ai tool can be used if the applicant already has a project idea and wants to assess different circular value chains for their region or cross-border alternatives. Both tools should help applicants of the IEC24 to gain a better understanding of potential partners, value chains and sustainability aspects. Further information on the tools can be found for the VCG in D.1.2.1 and for the SAT in D.1.1.2.

